

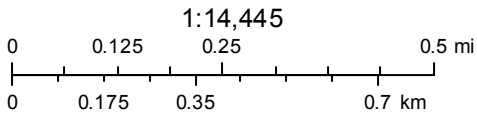
10088 Rocky Ridge Rd



May 2, 2017

- Parcels
- Abstracts

Disclaimer: This product is for informational purposes only and has not been prepared for or be suitable for legal, engineering, or surveying purposes. It does not represent an on-the-ground survey and represents only the approximate relative location of boundaries



Sources: Esri, HERE, DeLorme, USGS, Intermap, INCREMENT P, NRCan, Esri Japan, METI, Esri China (Hong Kong), Esri Korea, Esri (Thailand),

10088 Rocky Ridge Rd

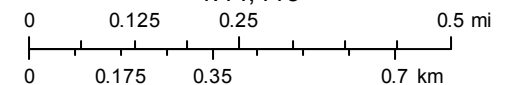


May 2, 2017

- Parcels
- Abstracts

Disclaimer: This product is for informational purposes only and has not been prepared for or be suitable for legal, engineering, or surveying purposes. It does not represent an on-the-ground survey and represents only the approximate relative location of boundaries

1:14,445



Source: Esri, DigitalGlobe, GeoEye, Earthstar Geographics, CNES/Airbus DS, USDA, USGS, AeroGRID, IGN, and the GIS User Community

Madison County Appraisal District & BIS Consulting - www.bisconsultants.com

This product and relative contents are the property of the respective governmental entity and BIS Consultants. Use is restricted for official purposes.



10088 Rocky Ridge Road

Boundaries Approx. Survey Required.

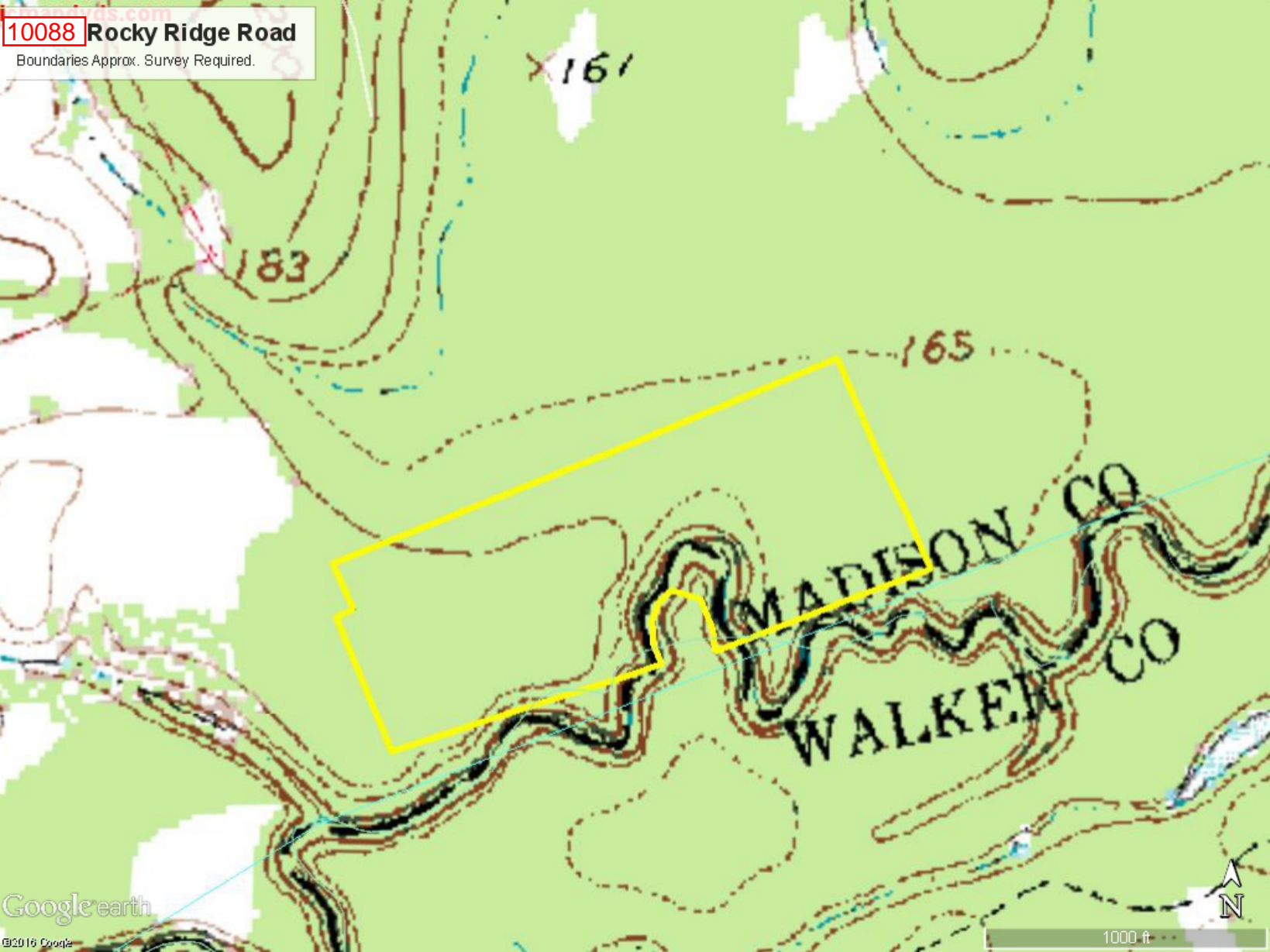
Google earth

© 2016 Google



1000 ft

10088 Rocky Ridge Road
Boundaries Approx. Survey Required.



10088 Rocky Ridge Road

Boundaries Approx. Survey Required.

