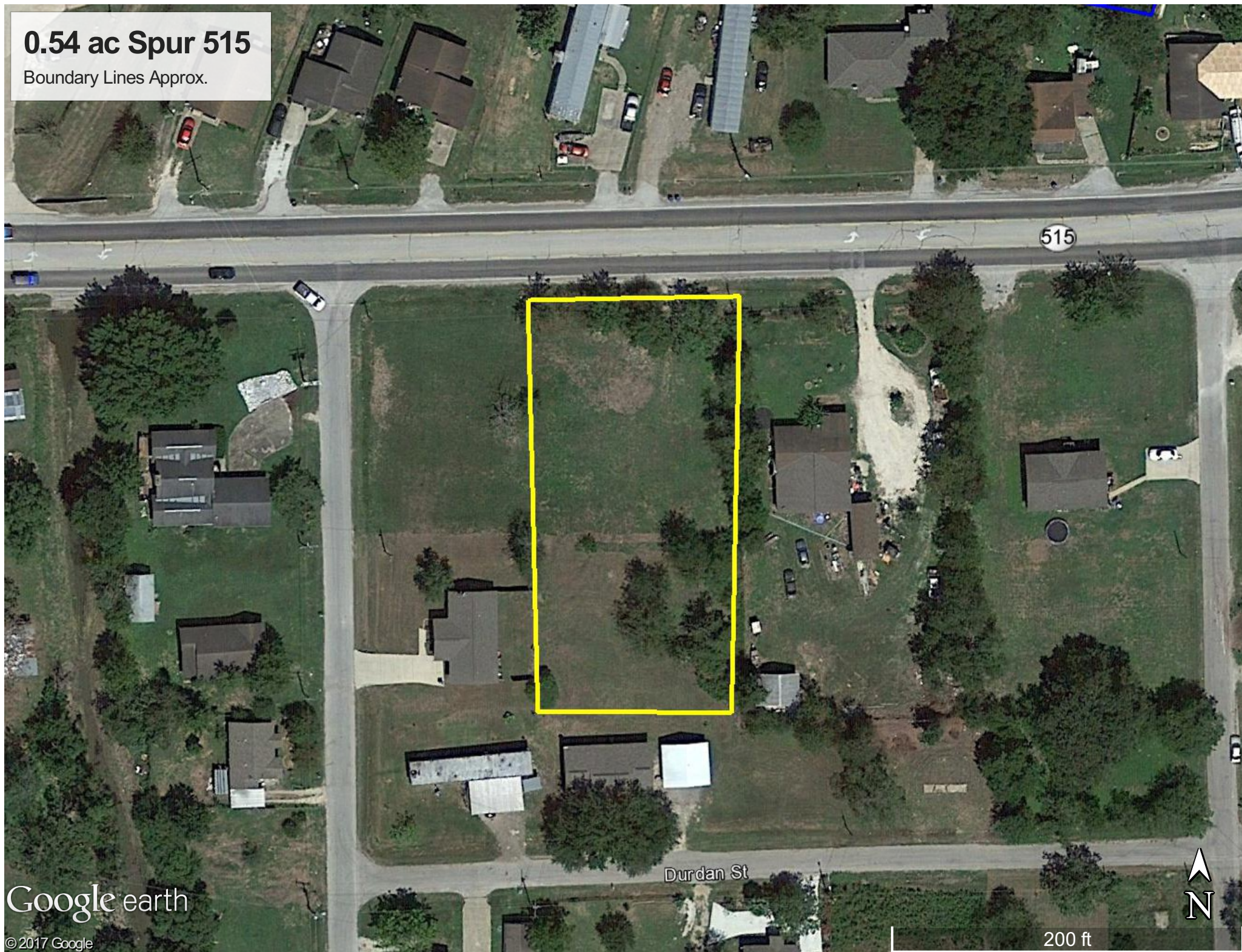


0.54 ac Spur 515

Boundary Lines Approx.



Google earth

© 2017 Google

FEMA's National Flood Hazard Layer (Official)

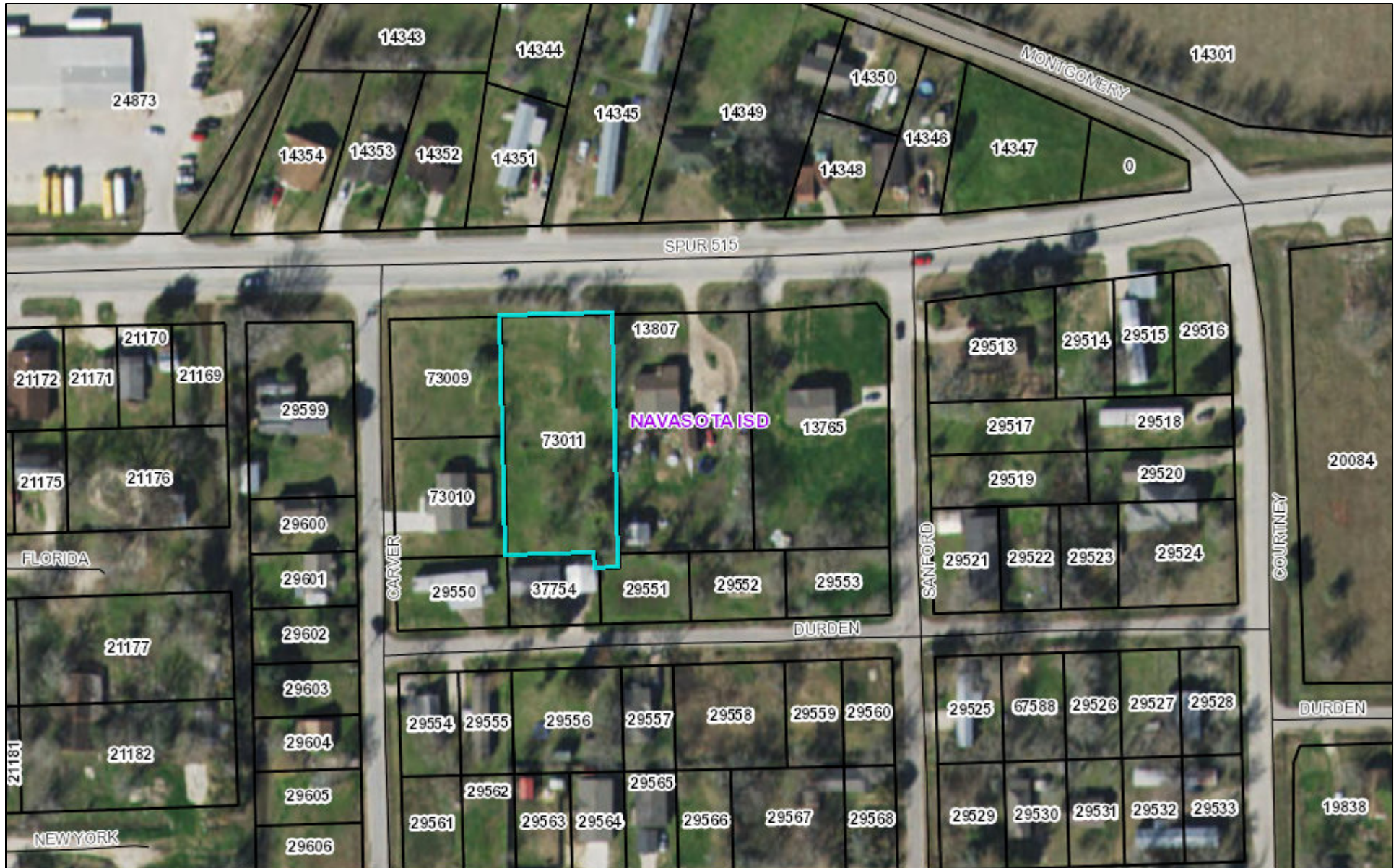


Data from Flood Insurance Rate Maps (FIRMs) where available digitally. New NFHL FIRMetite Print app available:
<http://tinyurl.com/j4xwp5e>

200ft

USGS The National Map: Orthoimagery | National Geospatial-Intelligence Agency (NGA); Delta State University; Esri | Print here instead:
<http://tinyurl.com/j4xwp5e> Support: FEMAMapSpecialist@riskmapcds.com | TX Orthoimagery Program, DigitalGlobe, Microsoft, CNES/Airbus DS

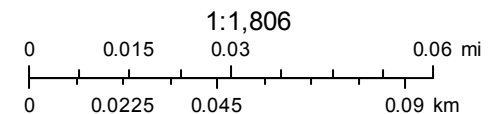
.54 ac Spur 515



December 11, 2017

- Parcels
- School Districts
- Streets

Disclaimer: This product is for informational purposes only and has not been prepared for or be suitable for legal, engineering, or surveying purposes. It does not represent an on-the-ground survey and represents only the approximate relative location of boundaries



Source: Esri, DigitalGlobe, GeoEye, Earthstar Geographics, CNES/Airbus DS, USDA, USGS, AeroGRID, IGN, and the GIS User Community

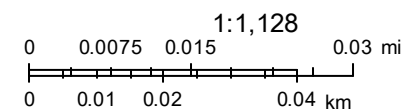
Grimes Central Appraisal District & BIS Consulting - www.bisconsultants.com

This product and relative contents are the property of the respective governmental entity and BIS Consultants. Use is restricted for official purposes.

0.54 ac Spur 515



December 11, 2017



Source: Esri, DigitalGlobe, GeoEye, Earthstar Geographics, CNES/Airbus DS, USDA, USGS, AeroGRID, IGN, and the GIS User Community