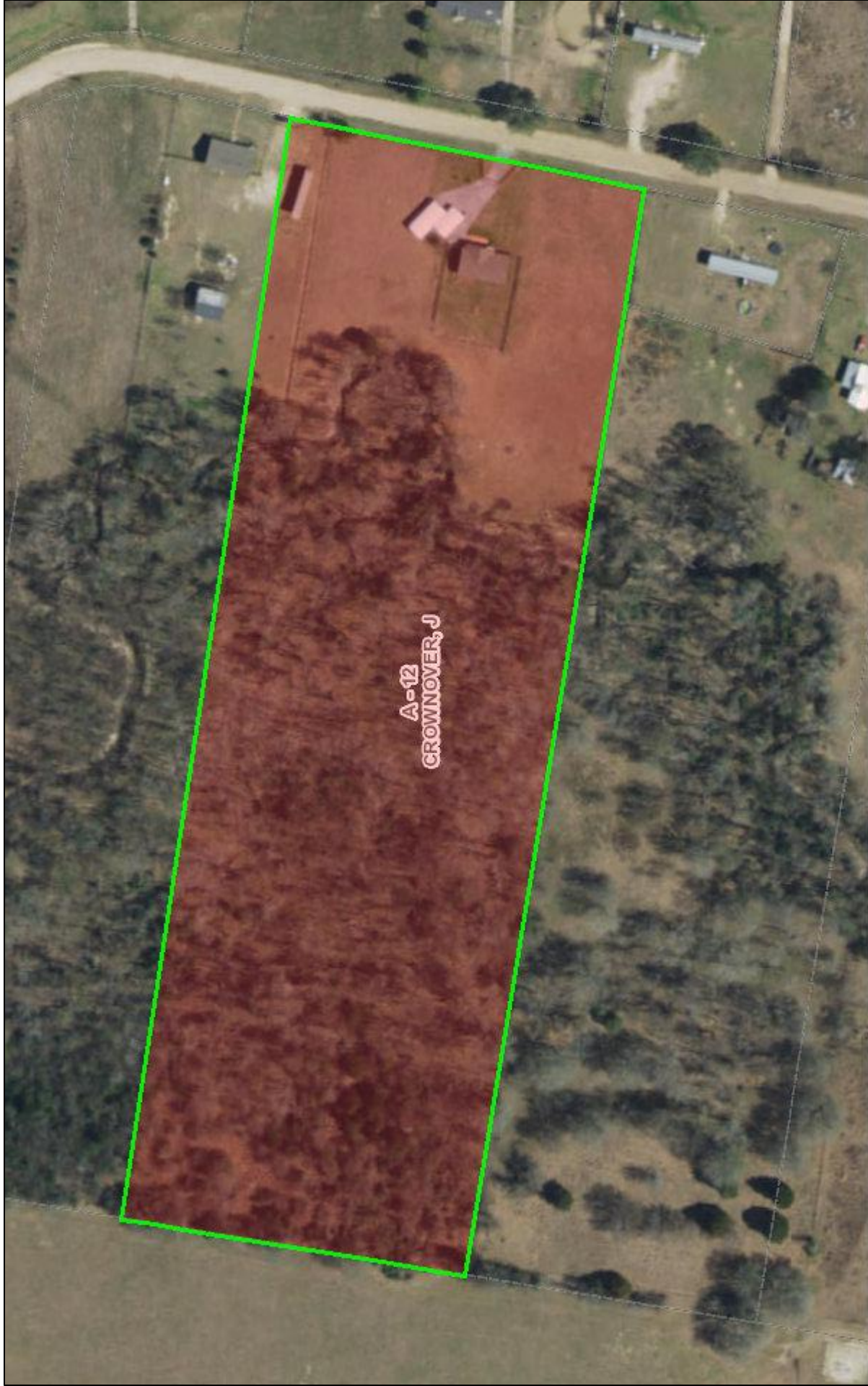


1976 Mustang Loop Aerial



Disclaimer: This product is for informational purposes only and has not been prepared for or be suitable for legal, engineering, or surveying purposes. It does not represent an on-the-ground survey and represents only the approximate relative location of boundaries

February 1, 2018

-- Lot_Lines

□ Abstracts

1:2,176

0 0.0175 0.035 0.07 mi

0 0.0275 0.055 0.11 km

Source: Esri, DigitalGlobe, GeoEye, Earthstar Geographics, CNES/Airbus DS, USDA, USGS, AeroGRID, IGN, and the GIS User Community

Madison County Appraisal District & BIS Consulting - www.bisconsultants.com
This product and relative contents are the property of the respective governmental entity and BIS Consultants. Use is restricted for official purposes.