

3131 E. 29TH, BUILDING D

Stanford Court, Bryan, Texas

List Price: \$385,000



Stanford Court

The office park consists of 6 brick veneer free standing office buildings ranging in size from 2,000 to 5,000 square feet.



Hank McQuaide, Broker Associate

979.255.1599

hank@hankmc.com

bcrbcs.com

Office: 979.694.8844

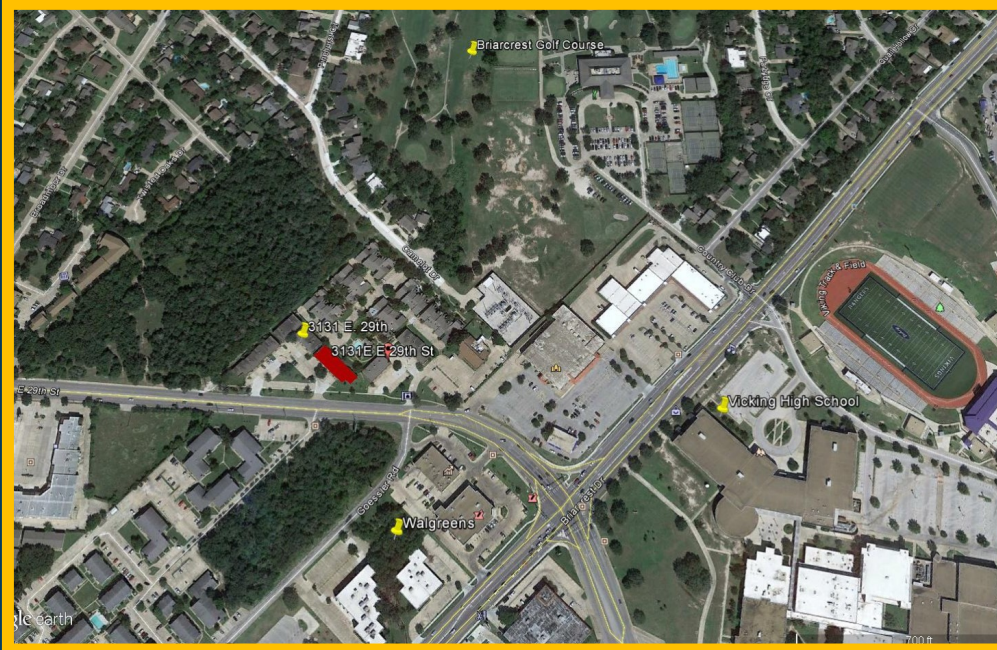


The information contained herein is deemed reliable. However, no representation or warranties are made as to the accuracy thereof. This offer is made subject to errors, omissions and changes in price, corrections, prior sale and withdrawals without notice.



3131 E. 29TH STREET BLDG D

Stanford Court



Location

Prime office available in the Bryan East Retail corridor. Located one block east of St. Joseph's Regional Medical Center and the block west of Bryan High School, next to the old Ken Martians Steakhouse.

Floor Plan

The building contains approximately 4,265 square feet. There are two tenants currently in the building that lease approximately 3,400 square feet at a rental rate of \$3,122.50 per month.



Additional Leasable Space

There is approximately 1,000 square feet of leasable space that includes 2 large offices and access to the kitchen and restrooms.

