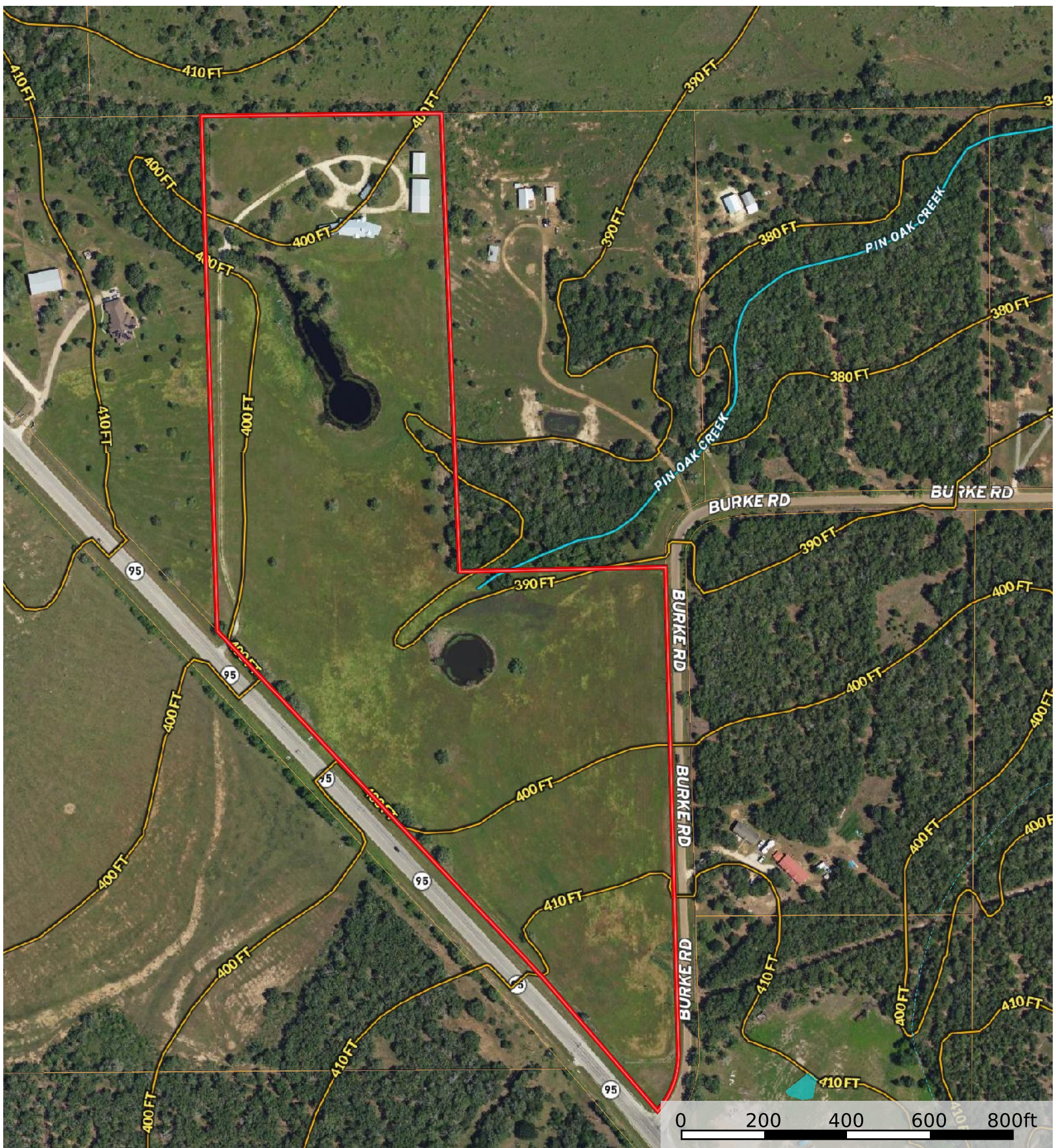


**5411 Hwy 95 Flatonia**  
 Fayette County, Texas, 32.331 AC +/-



Boundary	Substations	Voltage Unavailable	Voltage 0 - 99 KV	Voltage 100 - 161 KV	Voltage 220 - 287 KV	Voltage 345 KV	Voltage 500 KV	Voltage 735 KV+	Water Wells
100 Year Floodplain	500 Year Floodplain	Floodway	Special	Unmapped/ Not Included	Crude Oil	Natural Gas	Other	Stream, Intermittent	River/Creek
Water Body									

Tanya Schindler  
 P: 361-865-2563

www.sctxsales.com

1400 Fm 609, Flatonia, TX 78941

The information contained herein was obtained from sources deemed to be reliable. Land id™ Services makes no warranties or guarantees as to the completeness or accuracy thereof.